



Hamilton

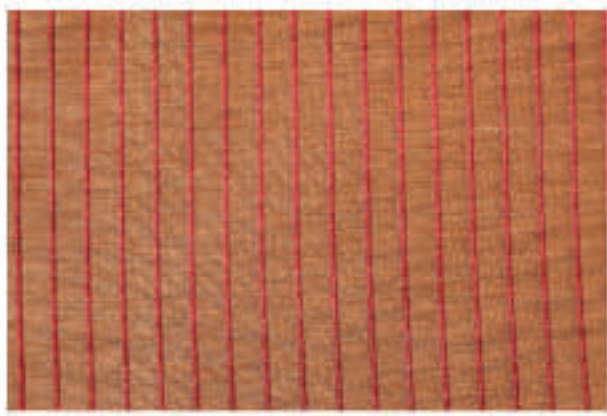
Two tone jacquard fabric with raised woven matlasse stripes

- Custom sewn in California
- Thermal and blackout lining available
- Top styles including grommet and ring top
- Wide selection of coordinating hardware
- See back for specifications and ordering

Hamilton



Fabric Colors



Sienna



Chocolate



Seafoam

View more colors online

Top Style



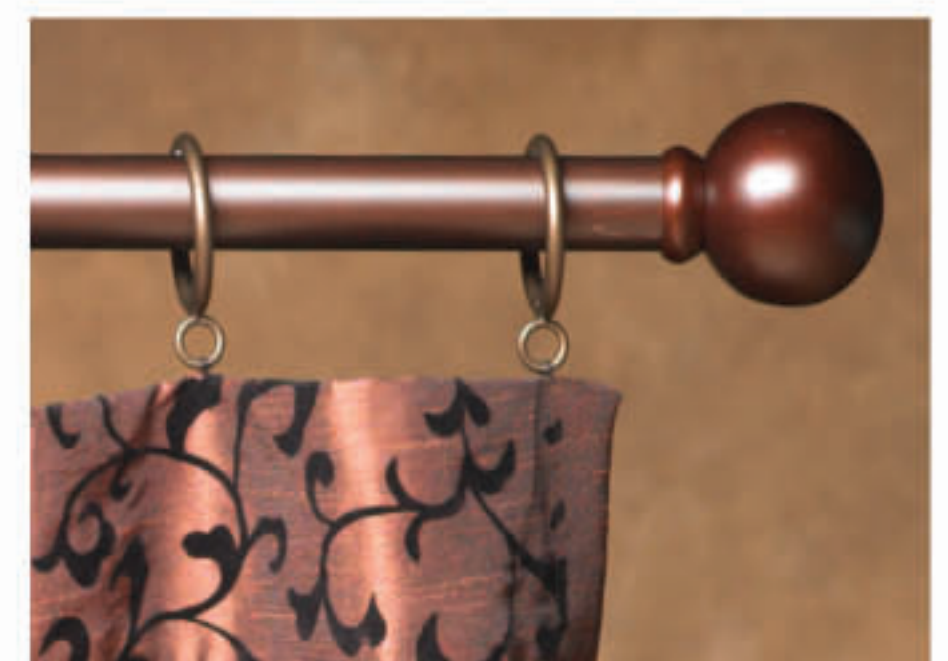
Rod Pocket (no header)



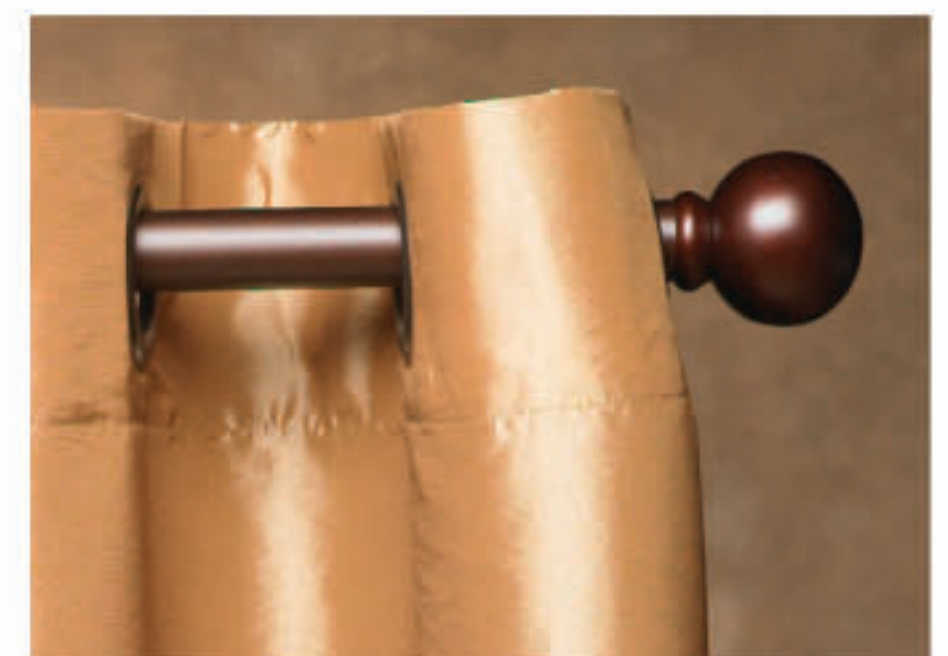
Back Tab/ Design Tab



Ring Top/ Clip



Ring Top/ Sewn



Grommet Top

Select the following options

Size

A sizing guide is available on our website

This style is available 51" in width and may be ordered in any length up to 120" long

51" width x _____ length

All panels sewn with 1" double folded side hem & 4" bottom hem

Fabric Color

- | | | |
|----------------------------------|------------------------------------|--------------------|
| <input type="checkbox"/> Copper | <input type="checkbox"/> Chocolate | more colors online |
| <input type="checkbox"/> Magnum | <input type="checkbox"/> Toffee | |
| <input type="checkbox"/> Seafoam | <input type="checkbox"/> Sienna | |

Top Style All styles accommodate rods up to 1 1/2" in diameter

- | | |
|-------------------------------------|--|
| <input type="checkbox"/> Rod pocket | <input type="checkbox"/> Ring top (10 rings sewn on) |
| <input type="checkbox"/> Back tab | <input type="checkbox"/> Ring top (10 clip rings included) |
| <input type="checkbox"/> Grommet | |

See hardware catalog for available ring sizes & finishes

Lining

Lining is sewn into top and side seams with the bottom open

- Unlined - No lining
- Lined - 80% polyester/ 20% cotton white lining
- Inter-lined - Lined + inner-lining of 100% flannel cotton

Inter-lining is two layers of lining that provides R9 thermal insulation and blackout room darkening.

Weighted corners

Your drapes will hang beautifully when you add our square drapery weight into the bottom hems

- Yes No

Quantity _____

To get a quote, refer to our pricelist or call:

Hamilton

100% polyester • dry clean only

◀ Shown on front page

Close up panel shot: Shown with the Camelot finial in Pewter finish from the Estate Wrought Iron Collection

In use window shot: Shown with the Angelica sheer in white and the Sausalito finial in Nickel finish from the Contemporary Metal Collection

Custom sewn in California

© Copyright 2008