



Casablanca

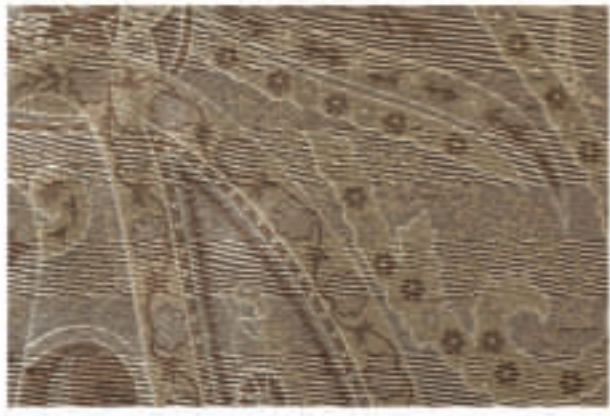
Elegant jacquard with a flowing paisley pattern.

- Custom sewn in California
- Thermal and blackout lining available
- Top styles including grommet and ring top
- Wide selection of coordinating hardware
- See back for specifications and ordering

Casablanca



Fabric Colors



Latte



Sienna



Taupe

Top Style



Rod Pocket (no header)



Back Tab/ Design Tab



Ring Top/ Clip



Ring Top/ Sewn



Grommet Top

Casablanca

100% polyester • dry clean only

Select the following options

Size

A sizing guide is available on our website

This style is available 51" in width and may be ordered in any length up to 120" long

51" width x _____ length

All panels sewn with 1" double folded side hem & 4" bottom hem

Fabric Colors

- Sienna
- Latte
- Taupe

Top Style All styles accommodate rods up to 1 1/2" in diameter

- Rod pocket
- Back tab
- Grommet
- Ring top (10 rings sewn on)
- Ring top (10 clip rings included)

See hardware catalog for available ring sizes & finishes

Lining

Lining is sewn into top and side seams with the bottom open

- Unlined - No lining
- Lined - 80% polyester/ 20% cotton white lining
- Inter-lined - Lined + inner-lining of 100% flannel cotton

Inter-lining is two layers of lining that provides R9 thermal insulation and blackout room darkening.

Weighted corners

Your drapes will hang beautifully when you add our square drapery weight into the bottom hems

- Yes
- No

Quantity _____

To get a quote, refer to our pricelist or call:

◀ Shown on front page

Close up panel shot: Shown with the Papyrus finial in Pewter finish from the Estate Wrought Iron Collection

In use window shot: Shown with the Angelica sheer in white and the Sausalito finial in Nickel finish from the Contemporary Metal Collection

Custom sewn in California

© Copyright 2008